

# Practice Labs for CompTIA

Practice Labs gives you the ability to configure a wide range of technologies in a safe environment using just your browser.

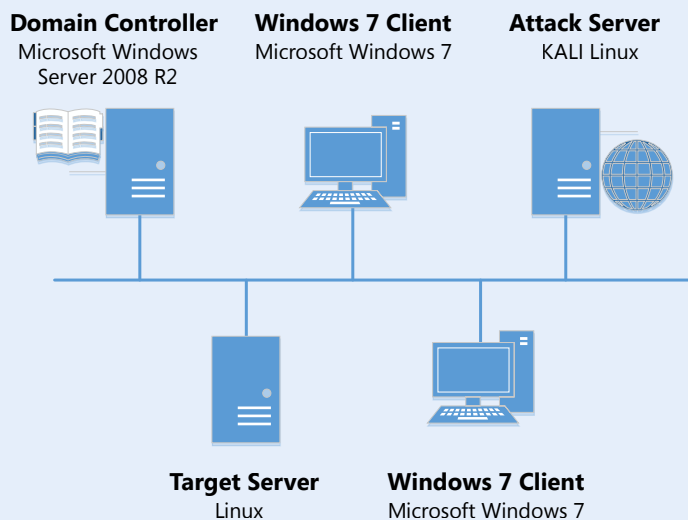
With our Practice Labs for CompTIA we cover a range of certification titles. These include the A+, Network+ and Security+. The platform offers those new to IT, or looking to gain a certification an opportunity to work with industry standard technologies in order to develop deeper understanding of key subject matter. The associated lab guides cover exam and real world scenarios for each of these certifications, all carried out on real equipment.

## 1 CompTIA Lab Hardware

Our hosted platforms are configured to imitate real world configurations by providing sufficient hardware not only to carry out tasks but also test the impact of those changes. From the browser you gain administrative access to the relevant devices giving you complete control to carry out either your own configurations, or follow the lab guides to configure specific technologies that are required for the relevant CompTIA exams.



### Lab Diagram



### CompTIA Security + Lab hardware

- 1 \* **AD Domain Controller**
- 2 \* **Windows 7 Client**
- 1 \* **KALI Linux Server**
- 1 \* **Linux Server**

### CompTIA Network + Lab hardware

- 1 \* **AD Domain Controller**
- 1 \* **Windows 7 Client**
- 1 \* **Gateway Server**
- 1 \* **Router**
- 1 \* **Web Server**

Example Lab: **SY0-401** - CompTIA Security +

## 2 Lab Courseware

Our lab guides cover a wide variety of topics, from basic configuration and troubleshooting to advanced subjects like network security or configuring directory services. Each topic contains a set of instructions to configure or administer software in a specific way so that you achieve the objectives set out.



# Practice Labs for CompTIA continued.

## Task based course outline

module includes the following exercises:

- 1) Spoofing a DNS Server
- 2) Exploring DNS Server Vulnerabilities

### Lab Diagram

During your session you will have access to the following lab configuration.



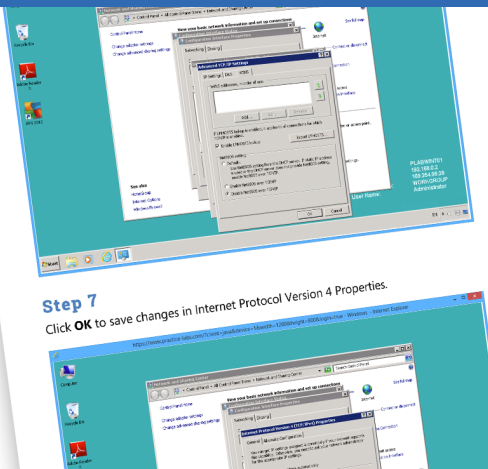
### Connecting to your lab

In this module you will be working on the following equipment to carry out the steps defined in each exercise.

- PLABDC01 (Domain Controller)
- PLABWIN701 (Windows 7)
- PLABSRV01 (Kali Linux)

Each exercise will detail which console you are required to work on to carry out the steps.

To start simply click on the named Server from the device list (located on the left hand side of the screen) and click the **Power on** from the in the tools bar. In some cases



Each course contains the steps and pre-configured equipment enabling you to jump right in to the tasks without the fuss of configuring a set of pre-requisites. This enables focused effort on the topic you wish to carry out.

Example Course: **SY0-401** - CompTIA Security +

## 3 2015 Course List:

**220-802** - CompTIA A + Support Skills

**N10-005** - CompTIA Network +

**SY0-401** - CompTIA Security +

**SK0-003** - CompTIA Server +

**LX0-101 and LX0-102** - CompTIA Linux + Support Skills

## 4 Practice Labs Usability

- Wide range of industry standard technologies at your disposal
- Choose to follow an exam path or create your own configuration.
- Unlimited access removes any time pressure and the ability to reset and start over with the click of a button removes any fear of making mistakes.
- Practice Labs for CompTIA enables you to focus on gaining a deep understanding of this vendors different technologies.

